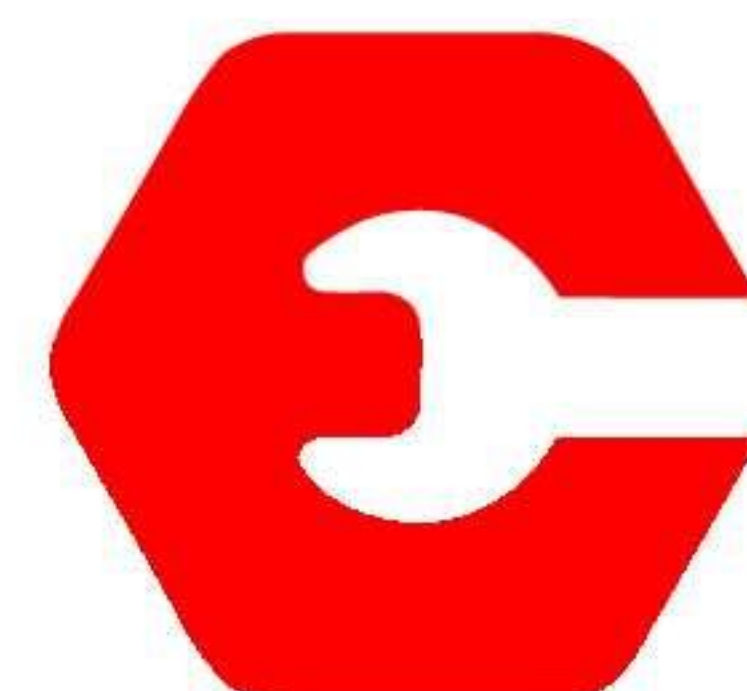


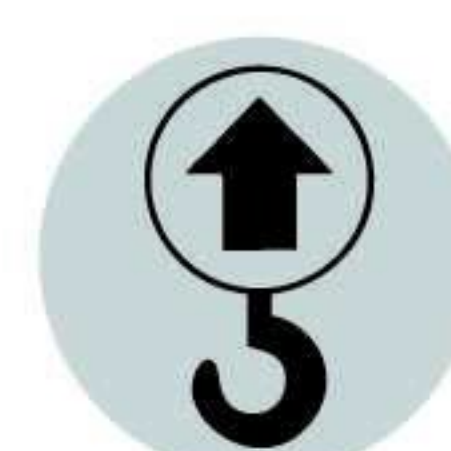
# ESCORTS



## HYDRA 13

36

ESCORTS HYDRA 13



Capacity  
**13 T**



Boom Height  
**36 Feet**



Straight Axle  
**Heavy Duty**



Transmission  
**Robust**

Contact : 9300723311



SPECIFICATIONS

Contact : 9300723311



RATED CAPACITY

13 Tonne at	1.7 m radius
2.3 Tonne at	8.2 m radius



ENGINE

Make & Model	Simpson S 433 (I) – CEV BS III, 4 cylinder, water cooled diesel engine developing 48 HP @ 2200 RPM or equivalent
--------------	--



TRANSMISSION

Drive	2 Wheel drive
Type	Heavy duty transmission developed especially for crane application. Constant mesh gearbox coupled with straight drive axle. Eight forward and two reverse speeds with high/low selector lever
Max. Speed	29 km/hr. (unladen)
Clutch	Heavy duty clutch, wire woven, asbestos free



STEERING

Type	Articulated power steering, hydraulically controlled through 2 double acting jacks
Articulation	Up to 50°
Turning Radius	Approx 6.75 m



HOIST MECHANISM

Hoist	Hydraulic winch. Four falls. Rope dia 13 mm
-------	---



BRAKES

Front Wheel	Pneumatic assisted hydraulic brakes
Rear Wheel	Disk brakes actuated through a slave cylinder
Parking	Hand control valve operated, Air assisted Hydraulic parking brakes at rear wheels (Standard models) Hand control valve operated, Air assisted Parking brakes at Front wheels (with Air brake models)



HYDRAULIC SYSTEM

Pump	Vane type hydraulic pump
Control Valve	4 spool control valve with built in pressure relief valve and precision control
Hydraulic Filter	Suction line has a 100 mesh inline strainer while return line has 25 microns full flow filter



ELECTRICAL SYSTEM

Type	12V Single battery, Negative earth
------	------------------------------------



CAPACITIES

Fuel Tank	38 ltrs.
Hydraulic Tank	65 ltrs.



TRACK

Front	1980 mm
Rear	1680 mm



OVERALL DIMENSIONS

Length	11000 mm
Width	2550 mm
Height	3100 mm



OPERATING WEIGHT (KG)

Gross vehicle weight	10610 kg
----------------------	----------



BOOM

Telescoping	3 parts hydraulically powered & fully synchronized
Derricking	Through double acting jacks



TYRES

Front	10.00 X 20 -16 PR (4 nos.), inflation pressure 110 —115 PSI
Rear	13.00 X 24 -12 PR (2 nos.), inflation pressure 35 PSI. Water ballasted



SAFETY SYSTEM

- Overload audio warning system
- Safety brakes on hoist
- Cylinder guard for protection
- Rope compensation for auto leveling
- Counter balance protection valve in the lift line against hose burst
- Visual warning against parking brakes ON



STANDARD ACCESSORIES

- All Weather Cabin
- Lift Cylinder Guard
- Turn & Reverse Lamp
- Front Bumper
- Rear View Mirror
- Reflectors

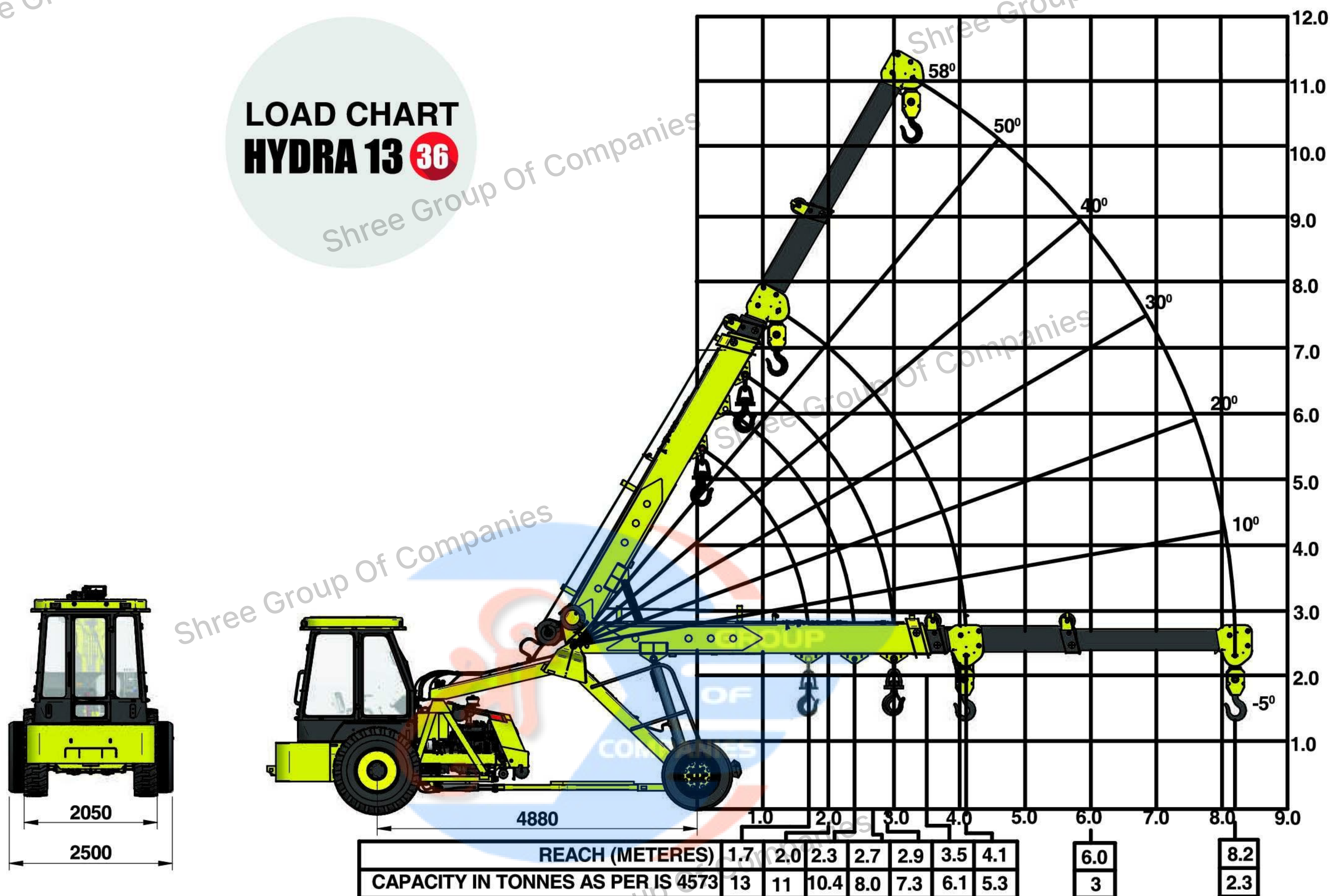


OPTIONAL ACCESSORIES

- Fly Jib
- Tool Box
- Spark Arrestor
- Tyre Guard
- Steering Wheel
- Fire Extinguisher
- Safe Load Indicator (SLI)
- Heavy Duty Bumper
- 14 x 24 Heavy Duty Tyres
- Air Brakes on Front Wheel
- Over Hoist & Hydraulic Cutoff Kit

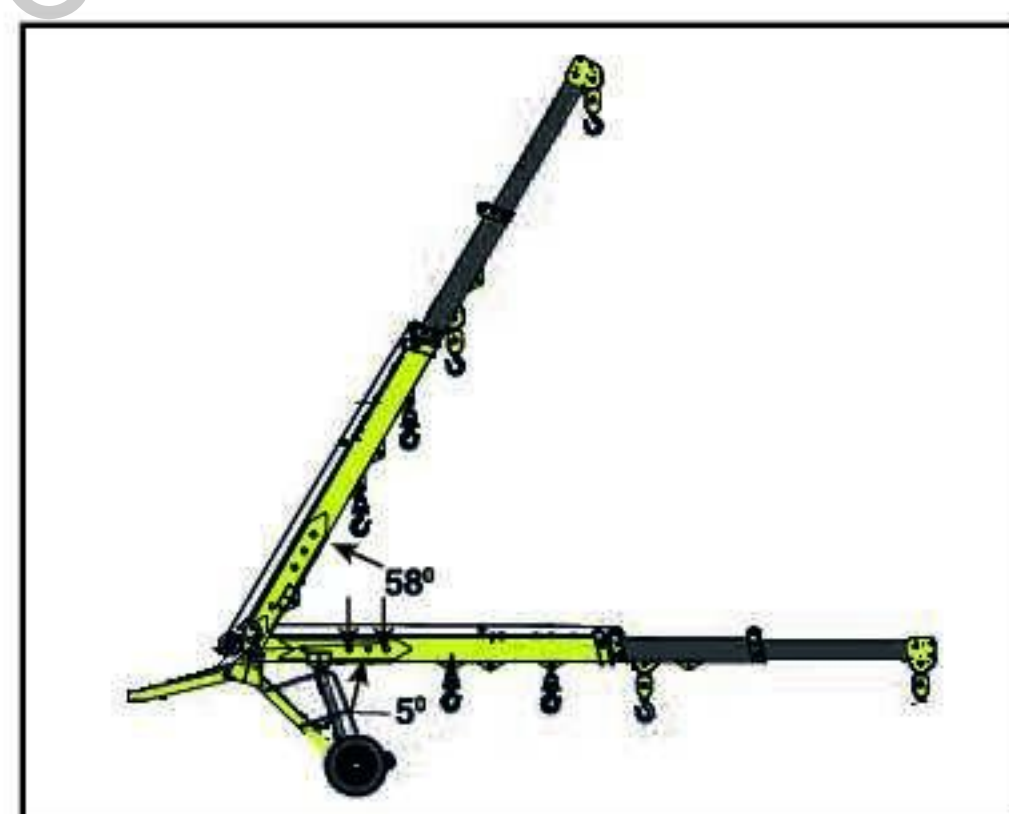


**LOAD CHART**  
**HYDRA 13 **36****



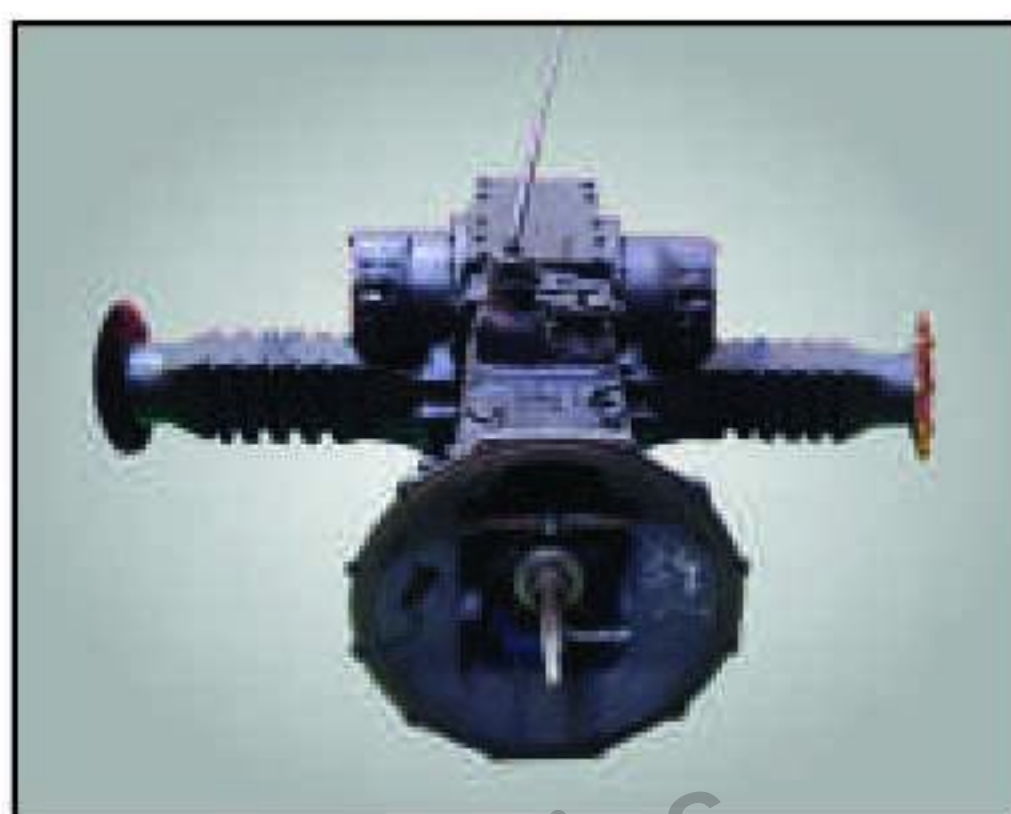
Rated loads are calculated for operation on leveled surface.

**FEATURES**



**LUFFING RANGE**

Boom Luffing Range -5° to 58°



**TRANSMISSION**

Heavy duty straight axle with constant mesh transmission.



**CABIN**

Ergonomically designed spacious cabin with modern dashboard for utmost operator comfort and operation.



**REAR BRAKES**

Disc brakes at the rear for effective braking.



**INCREASED STABILITY**

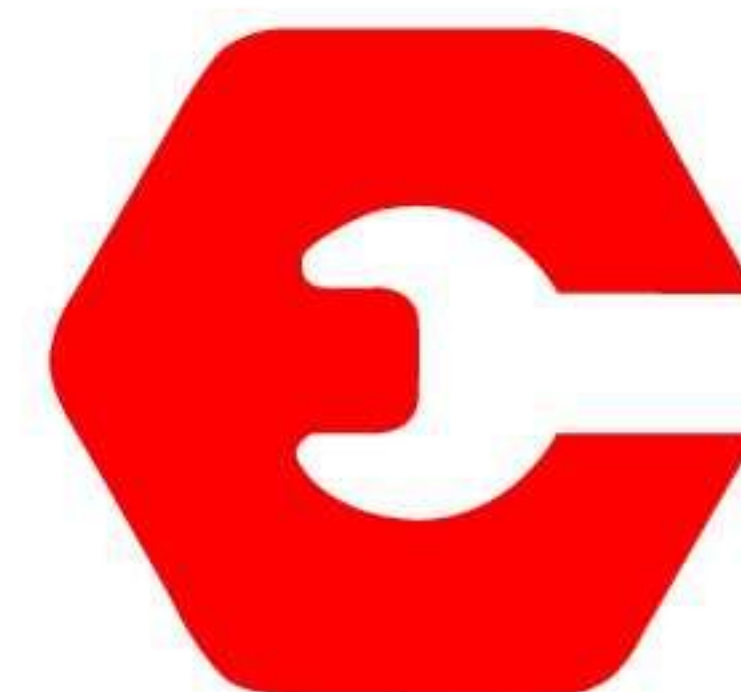
At fully articulated condition. Wider lift cylinders' span (400 mm).



**ENGINE**

BS III (CEV compliant), category engine with high on power / torque & low on fuel consumption & maintenance.

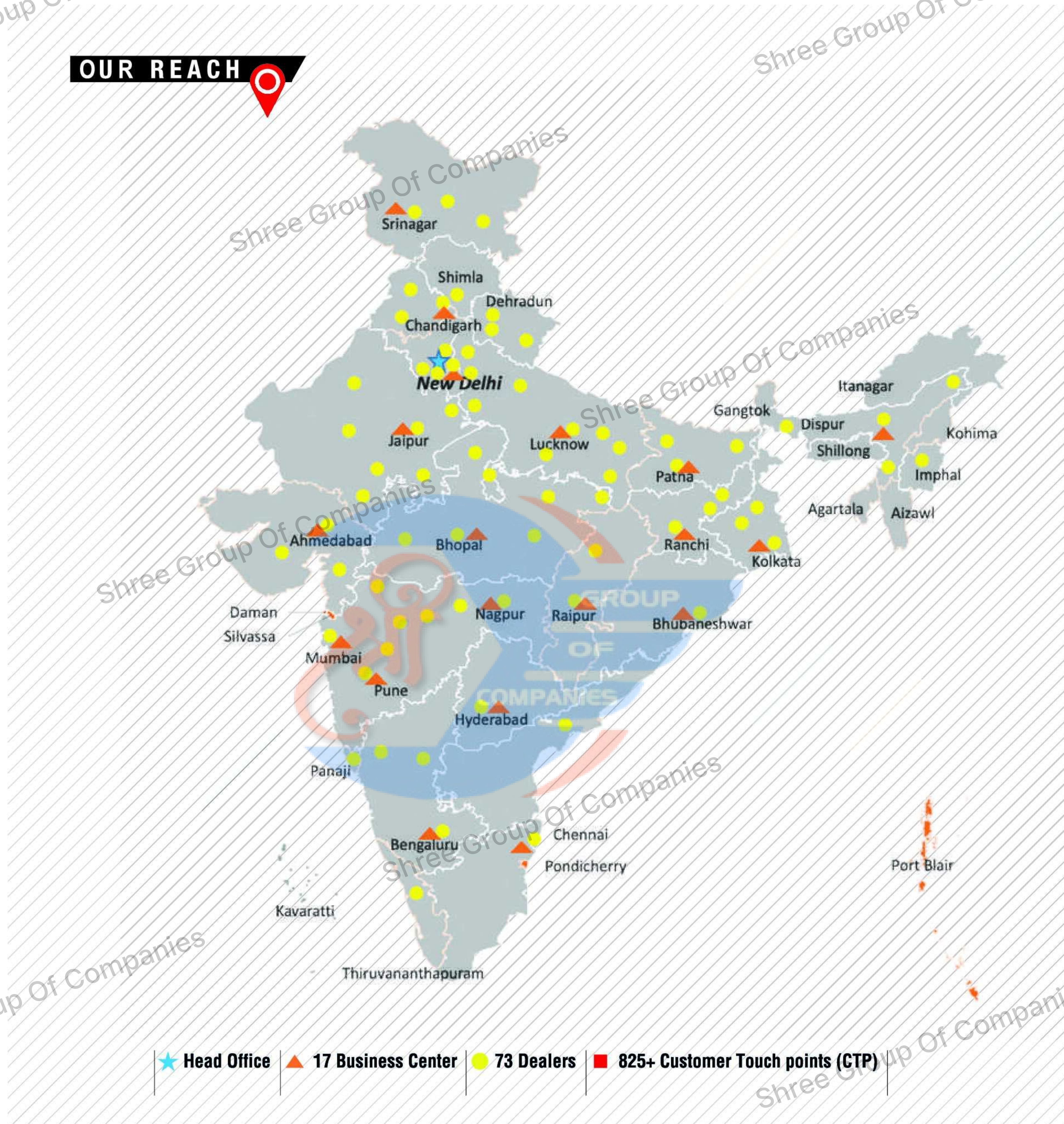




Shree Group Of Companies

Shree Group Of Companies

## OUR REACH

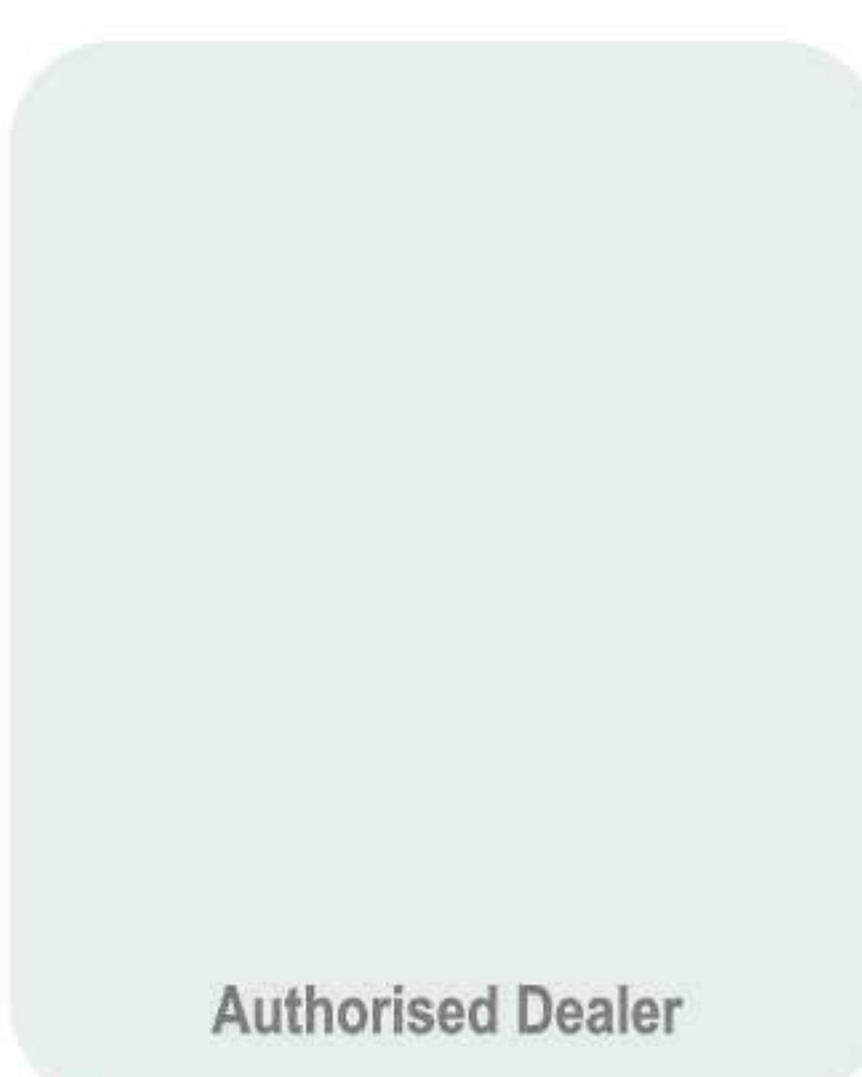


**Toll Free No.:**  
**1800-180-4488**  
(Timings: 9.30 am - 6.00 pm, Monday to Friday)  
e-mail: ece.helpline@escorts.co.in

**Escorts Kubota Limited (Formerly Escorts Limited) Construction Equipment**  
Plot No. 219, Sector- 58, Ballabhgarh- 121 004, Faridabad, Haryana (INDIA)  
Tel.: 0129-2306574/2306598/2306571  
Fax: 0129-2306572 Website: www.escortsgroup.com



GET IT ON  
**Google Play**  
Download Customer App  
for more details



• The information contained in this leaflet is intended to be of a general nature only. • We reserve the right to changed specifications without notice. • All Dimensions and weights are variable within +/-5%.

Contact : 9300723311

(Accessories as shown in the picture may not be the part of standard fitment and are subject to change without prior notice.)

MKT/22/Hydra 13 36